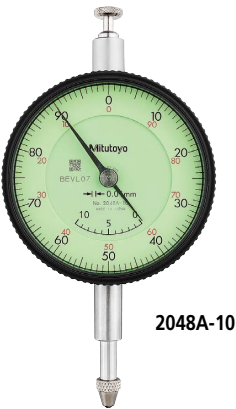


Dial Indicators

SERIES 2 — Special Dial Indicators

Adjustable hand dial indicator

- The hand position can be adjusted independently of the vertical movement of the spindle by rotating the top knob.



2048A-10



Optional Accessories

- Limit hand (2 pcs.), Bezel clamp
Refer to page 07-27 for details.

SPECIFICATIONS

Metric											
Code No.		Graduation (mm)	Range (range/rev) (mm)	Maximum permissible error (MPE) (μm)						Dial reading	Measuring force (N)
w/lug	Flat-back			Indication error				Hysteresis	Repeat- ability		
				1/10 Rev	1/2 Rev	1 Rev	Measuring range				
2048A-10	2048AB-10	0.01	10 (1)	5	9	10	15	3	3	±0-100	1.4 or less

Note: Completed products inspection is performed in the vertical orientation (contact point downward) and the stated accuracy is guaranteed.

DIMENSIONS

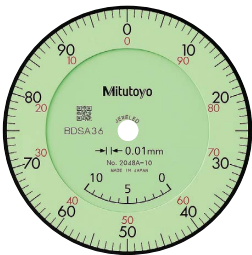
ISO/JIS
Type

Unit: mm

Code No.	A	B	C	D	E	F	G	H	I	Mass (g)	
2048A-10	47.4	64.9	57	18.1	20	16.9	19.5	52	7.6	w/lug	Flat-back
										144	135

Note: The shoulder on a contact point (standard accessory) acts as a stop to prevent spindle overrun that may otherwise damage the indicator. When replacing it with an optional contact point with a connector not exceeding ø7 mm in outside diameter, insert a washer (with ø7 mm outside diameter, ø3 mm inside diameter, and approximately 0.5 mm thickness) above the contact point.






Continuous scale



Graduation: 0.01 mm,
Measuring range: 10 mm

- 2048A-10
- With coaxial revolution counter
- Adjustable hand
- Jeweled bearing

FEATURES

Metric						
Code No.						
w/lug	Flat-back					
2048A-10	2048AB-10	✓	✓		✓	✓